

Monitor Update

TRIMASTER



LMD-xx51W Serie

- Firmware Ver. 1.02 für LMD-2451W *
- Auto Calibration Function
- LMD-1751W ab Januar 2010
 - 3G ready
 - Auto calibration function
 - Mengenpromo ab Januar 2010

* Nötig für Calibration Software & volle Zandar Board Kompatibilität

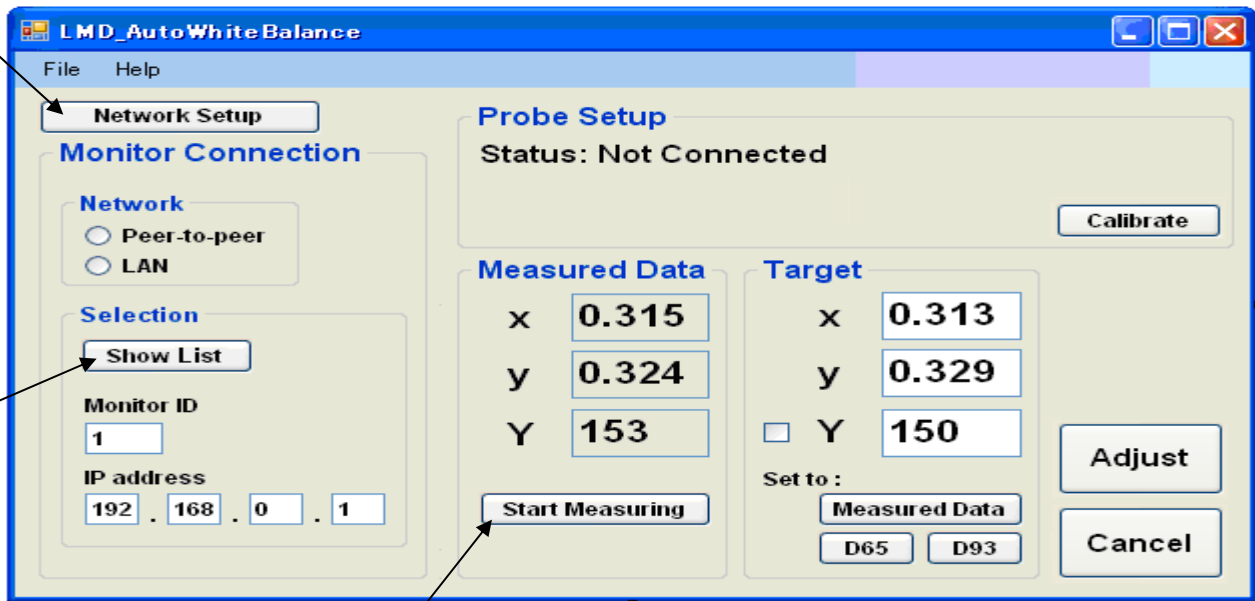
System Configuration

In case of wireless LAN



- Available connection
- Wireless LAN
 - Wired LAN
 - Peer to peer

GUI



List of monitor will be shown on a different window

You can measure a reference monitor, and copy the values

OS

Windows VISTA & XP
English and Japanese

EOL

- LMD-1410 & -1420
 - Nachfolger LMD-1530W

- LMD-9020, -9030 & -9050
 - Nachfolger LMD-940W

BVM-L & PVM-L Serie



PVM-L1700
Verfügbar



PVM-L2300



PVM-L3200
Ab Januar 2010

SONY PROFESSIONAL

Update für BVM-L23x auf SBIS

Updates für PVM-L2300 & BVM-L170 in Kürze

SONY



XDCAM EX

The next Generation

PMW-EX1R

Neue Funktionen

- SD Aufzeichnung
- HDMI Ausgang
- Verbesserter View Finder
- Cache Recording
- One Push Auto Iris

Verbesserungen

- Verbesserte Ergonomie/ Knöpfe
- One push S&Q Modus
- Schnellerer Start
- 1440x1080 in HQ
- Firmware upgrade durch Kunden

- Alle anderen Basisfunktionen sind identisch zur PMW-EX1
- **Nur** S-Video wurde bei der EX1R entfernt .

PMW-350

- Balanced lightweight design (3.2kg)
- Professional look and feel
- Low power (15W) & fast start-up
- XDCAM EX compliant
- Dual SxS memory card slots
- 2/3" 3 Exmor CMOS sensor system**
- Full HD 1920x1080 resolution
- F13 (50Hz) sensitivity, 59dB S/N ratio
- 1080 & 720 HD switchable
- 4 Channels audio for HD
- ALAC Unterstützung
- SD recording (option for DVCAM R/P)
- New highly adaptable HD viewfinder
- Wireless microphone receiver slot
- Shotgun microphone connection
- SDI, HDMI, TC In& Out, Gen Lock
- Optical ND & electrical CC filters
- Hyper Gamma
- Focus Magnification
- Scene File via SxS Card
- Over-cranking and under-cranking
- Interval and frame recording

Produktupdate

- Update für EX1, EX3 & EX30 ab E/Febr. 2010
- Clipbrowser 2.6
 - 1440x1080 HQ Modus
 - 4-kanal Audio
 - DVCAM
 - Flashband Compensation



NXCAM

AVCHD

Positionierung

Users Choice of:

XDCAM EX

Industry-adopted XDCAM EX format with models up to 2/3" shoulder

Highly Durable SxS card

Fastest File Transfer, with Established and Efficient Non Linear Workflow

Format
Media
Workflow

HDV

Industry-standard HDV with DVCAM Compatibility

Super-affordable DV Tape

Established Tape-based workflow

(or Faster Non Linear Workflow with HYBRID CF)

PXCAM

New AVCHD Long GOP Compression

Affordable Memory Media

HYBRID Operation & Evolving NLE Workflow with Blu-ray, Web, Mobile Platform

HXR-NX5E

The best AVCHD professional camcorder in the market



Sony's first professional AVCHD memory camcorder

– With the following key features:

- G Lens
- 3 Exmor CMOS sensors
- Active Steady Shot
- GPS
- HYBRID capability
- HD-SDI
- And much more...



New!

NXCAM Recording modes

	Video format		Resolution	Audio
1	AVCHD	<u>HD FX(24Mbps)</u> * 1080/50i	1920x1080/50i	AC3 Or LinearPCM Stereo
2	AVCHD	HD FH(16Mbps) 1080/50i		
3	AVCHD	HD HQ(9Mbps) 1080/50i	1440x1080/50i	
4	AVCHD	HD LP(5Mbps) 1080/50i		
5	AVCHD	<u>HD FX(24Mbps)</u> * 1080/25p	1920x1080/25p	
6	AVCHD	HD FH(16Mbps) 1080/25p		
7	AVCHD	<u>HD FX(24Mbps)</u> * 720/50p	1280x720/50p	
8	AVCHD	HD FH(16Mbps) 720/50p		
9	MPEG2 SD	SD HQ (9Mbps) 576/50i (4:3 or 16:9 aspect)	720x480/60i or 720x576/50i	

*FX mode (24Mbps) is the highest bit rate on offer with the AVCHD format.

Flexible recording mode

-1280x720/50p

-for 720p TV stations / productions



Linear PCM recording / playback

for professional users who are not satisfied with HDV audio quality



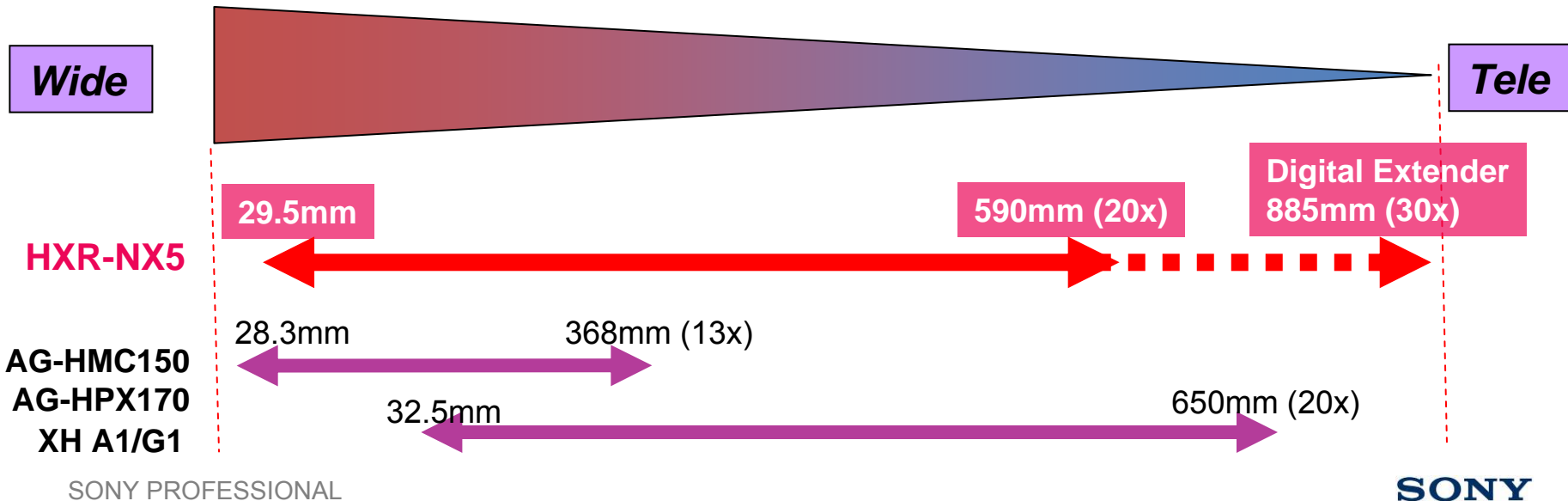
Recording format for SD in the HXR-NX5E

- MPEG2 SD recording
- similar to DVD-VIDEO stream
 - 720x576/50i (PAL)
 - 9Mbps
- Video codec is MPEG2 (Long GOP)
- Audio codec is Dolby Digital 2ch
- File container is MPEG2 Program Stream



Superb camera performance

- G Lens
- 20x optical zoom
- Wide angle from 29.5mm to 590mm
- Very low distortion even at the corner of frame



Excellent Low-light Sensitivity

Confidential

- Minimum Illumination : 1.5-lux
- Same as the HVR-Z5E, HVR-Z7E / S270E
- Good S/N even when the gain is increased
- Ideal for News / Documentary shooting



HVR-Z1E 0dB, normal shutter, F1.6

SONY PROFESSIONAL



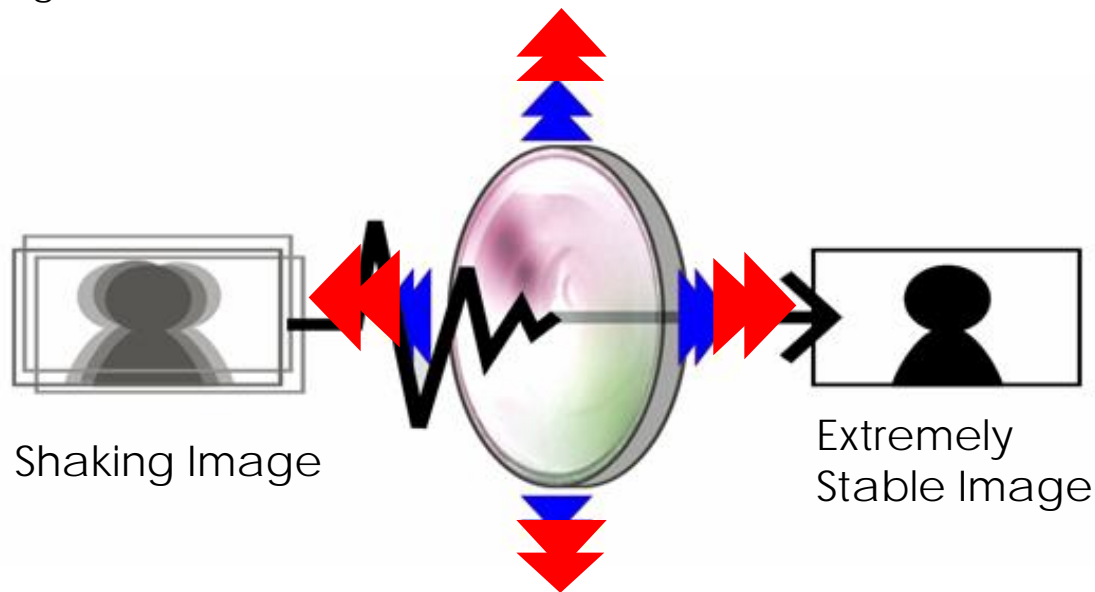
HXR-NX5E 0dB, normal shutter, F1.6

SONY

Active Steady Shot

Confidential

- *Extremely stable picture without blur !!*
- How Is This Realized ?
- More powerful stabilization is made possible by the increased optical lens coverage area and the improved detection with state of the art compensation algorithms



 New
Increased Range

 Conventional Range

SONY PROFESSIONAL

SONY

HD/SD-SDI output

Confidential

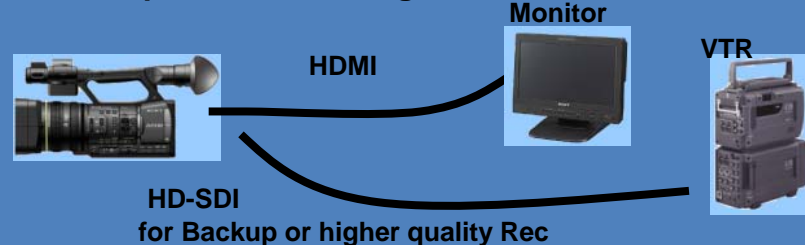
SDI is a popular I/F in the market among not only BC but also B&I users.

e.g.) cheap SDI capture boards, recorders with SDI input, etc.

Cheap devices
with SDI



An example: NX5 shooting in the field



Simultaneous output is possible!!

[OUTPUT SELECT] on MENU	SDI OUT	HDMI OUT	COMPONENT OUT	VIDEO OUT
[SDI]	OK	OK	-	-
[HDMI]	-	OK	-	-
[COMPONENT]	-	-	OK	SONY
[VIDEO]	-	-	-	OK

Memory recording enables file based operation

- Dual memory slots provide relay recording
- Continuous recording over two cards
- (A→B→A→B
-
- Touch panel operation with new GUI
- **Visual Index**
 - Straight forward and intuitive user interface for playback
 - Thumbnail picture helps to find the clip
 - Quick preview is useful for confirm the footage

SONY PROFESSIONAL



SONY

HYBRID Recording with HXR-FMU128 !!

- Optional Flash Memory Unit (128GB)
- **11hours** continuous recording without media change
- **Directly attach** to the camcorder without cable!
- **Faster transfer** speed to the PC than consumer memory media
 - No extra power cable needed (USB bus power)



	AVC HD 24M (FX)	AVC HD 17M (FH)	AVC HD 9M (HQ)	AVC HD 5M (LP)
32GB MS	170 min (2h 50m)	225 min (3h 45m)	385 min (6h 25m)	605 min (10h 5m)
Flash Memory Unit (128GB)	700 min (11h 40m)	930 min (15h 30m)	1570 min (26h 10m)	2490 min (41h 30m)

HYBRID Recording with HXR-FMU128 !!

HYBRID in HXR-NX5+FMU128:



HYBRID Format:

HD+SD is available (of course HD + HD)

- HD for the future, SD for the current production
- HD for editing, SD for preview on laptop

HYBRID Media:

Memory card + Flash Unit

- Removable card and big capacity drive
- For more secure backup

HYBRID Workflow:

For Editing + For Archiving

- FMU128 for editing (faster transfer than memory card)
- Memory card for archiving on another computer while editing

GPS !!

Confidential

It can be utilized as evidence where the footage were taken

- Recording

- GPS data recorded in AVCHD / MPEG2 SD video stream
- Recording data: Time, latitude, longitude
- Recording period: approx. 0.5 sec

- Playback

- GPS data (latitude and longitude) is displayed on screen.



AVCHD Interoperability (as of October 2009)

Software	Import to project	Codec in editing	AVC file output by using:	AVC encoding accelerator	BD burn or authoring
VegasPro9	File import	AVCHD native	VegasPro9		Vegas Pro 9 DVD Architect
VegasPro9 + <u>Cineform</u>	-File import -Cineform transcode	Cineform	VegasPro9		Vegas Pro 9 DVD Architect
Final Cut Pro 7	Log & Transfer	Prores422	Compressor	<u>Matrox MAX</u>	FCP 7 <u>Toast 10</u>
Premiere ProCS4(Win)	File import	AVCHD native	Media Encoder	<u>CUDA compatible Graphics Board</u>	Encore CS4
Premiere ProCS4(Win) + <u>Cineform</u>	-File import -Cineform transcode	Cineform	Media Encoder	<u>CUDA compatible Graphics Board</u>	Encore CS4
Premiere ProCS4(Mac)	File import	AVCHD native	Media Encoder	<u>Matrox MAX</u>	EncoreCS4
Edius Pro	File import	AVCHD native	EdiusPro	<u>Firecoder-Blu</u>	Ulead DVD Writer
Edius Pro	-File import -HQ codec /HDV transcode	CanopusHQ HDV	EdiusPro	<u>Firecoder-Blu</u>	Ulead DVD Writer
Avid MC	-File import -Transcode to DNxHD by <u>TMPGEnc Xpress4</u>	DNxHD	Sorenson Squeeze 5		Avid DVD by Sonic

SONY

SONY

Content Management Utility Software for Windows

New!

– This software:

- Imports files from a memory stick or flash memory unit
- Combines 2GB spanned files
- Imports relay recorded spanned files
- Browses clips
- Offers GPS mapping



Workflow on Windows / Editing on NLE



Memory card

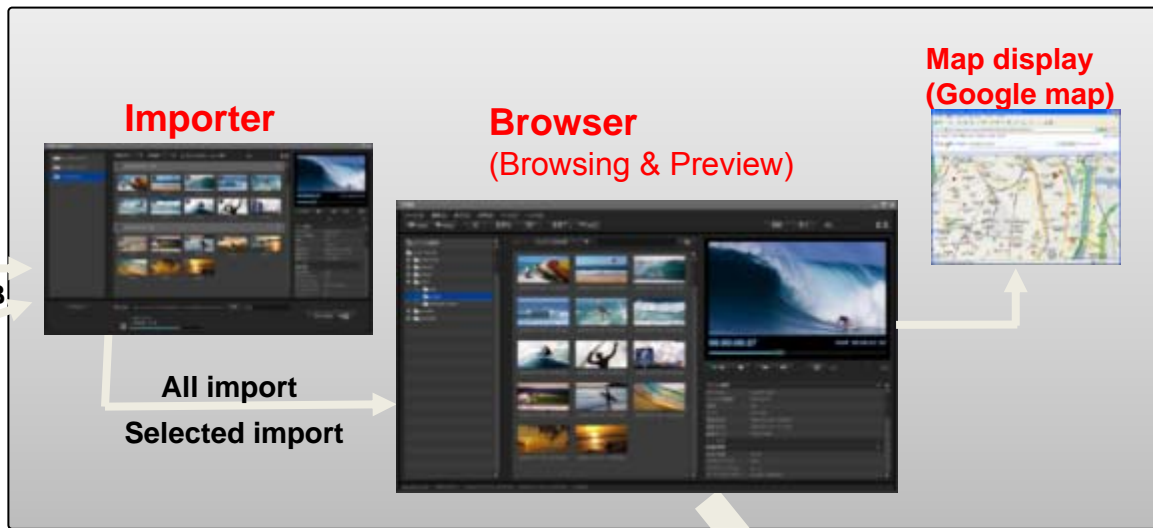


Via USB



Flash Memory Unit

Content Management Utility



1. Import to Windows using CMU
2. Browsing & Preview
3. GPS data is convenient
4. Drag & Drop to NLE

Drag & Drop to NLE



Editing on NLE **SONY**

Workflow on Mac / Editing on FCP

Confidential



Final Cut Pro



Via USB

Log & Transfer



Preview
Trim (for Partial transfer)

Convert to
ProRes422

FCP



Edit

1. Select clip using “Log & Transfer”
2. Convert to ProRes422
3. Edit on FCP

Note:
FCP (and QuickTime Player) doesn't support MPEG2-SD.
It is necessary to convert the .MPG file to .MOV by using a
conversion software such as “MPEG Streamclip”.

MPEG2-SD Editing

What about MPEG2-SD file editing for SD production.

Windows NLE

- Most NLE can edit the MPEG2-SD file.
- A preset of DV editing project is available.
- TC data is ignored (every clip starts from the TC of zero).

Mac NLE

- QuickTime doesn't support the MPEG2-SD ☹
- There are several freeware which are able to convert the MPEG2-SD file to an editable QuickTime file such as DV compressed .MOV file.
- TC data is ignored (every clip starts from the TC of zero).

Key Features HXR-NX5E

- 20x G-Lens
- 1/3" CMOS mit Exmor Technologie
- AVCHD 24Mbps
- 1920x1080
- 25p
- Linear PCM
- Relay recording by dual memory card slots
- Flash Memory Unit (128GB) for HYBRID operation
- Built-in GPS
- SDI/HD-SDI & HDMI

Competitive Review - Panasonic

	NXCAM	HMC151	HPX171
Recording system	AVCHD	AVCHD	P2
Imager	CMOS	CCD	CCD
Imager system	Exmor with ClearVid	Spatial off set	Spatial off set
Resolution	1920x1080,1280x720	1920x1080,1280x720 0	1280x1080,960x720
Lens	G Lens 20x	13x	13x
Picture angle	29.5mm to 590mm	28mm to 364mm	28mm to 364mm
Minimum illumination	1.5 lux (+18dB, 1/30) 3 lux (+18dB, 1/60)	3 lux (+12dB, 1/24) 3.8 lux (+18dB, 1/60)	3 lux (+12dB, 1/24) 3.8 lux (+18dB, 1/60)
LCD	921K	210K	210K
EVF	1227K	235K	235K
Digital output	HD-SDI, HDMI	HDMI	HD-SDI
Media slot	2 + external SSD	1	2

Competitive Review - Panasonic

	NXCAM	HMC151	HPX171
SD recording	MPEG2 SD	No	DVCPRO
High speed record	4 time over crank	No	No
Variable frame	No	No	Yes
Audio quality	LPCM, AC3	AC3	LPCM
External MIC	Supplied	Option	Option
HYBRID format rec	Yes	No	No
1080/25p native recording	Yes	Yes	No
Steady shot	Active steady shot	Normal	Normal
GPS	Yes	No	No
Maximum recording time by one media	700 min (128GB@24Mbps LPCM)	180 min (32GB@24Mbps AC3)	128 min (64GB@DVCPRO HD)

Difference between NXCAM and Handycam model

Feature		NXCAM	Handycam
Video	Compression	MPEG4 AVC/H.264	←
	Pixels & Video signal	1920x1080/50i, 25p 1440x1080/50i 1280x720/50p 720x480/50i	1920x1080/50i, 25p 1440x1080/50i 720x480/60i
Audio		LPCM /AC3(2ch)	AC3 (2ch)
Recording Media		MS Duo(2) + Flash Memory Unit	MS Duo(2)
Back-up Recording (Separate Rec.)		Yes (MS & EXT Flash Memory)	No
GPS Function		Yes	No
HD/SD-SDI output		Yes	No
TC IN/OUT (TC Link)		Yes	No
60/50i Switchable (Optional upgrade)		Yes	No

And more...

Time code setting, Rec button setting, Date Rec, Focus macro, High speed zoom, Smooth gain, Hyper gain, WB outdoor level, WB colour setting, Smooth WB, Colour bar, Aspect ratio, Safety zone, Zoom ratio display, Focus display, Shutter speed display, Battery display, TC RESET ...and 2 Year PrimeSupport in EU, Norway and Swiss.

SONY
make.believe

